

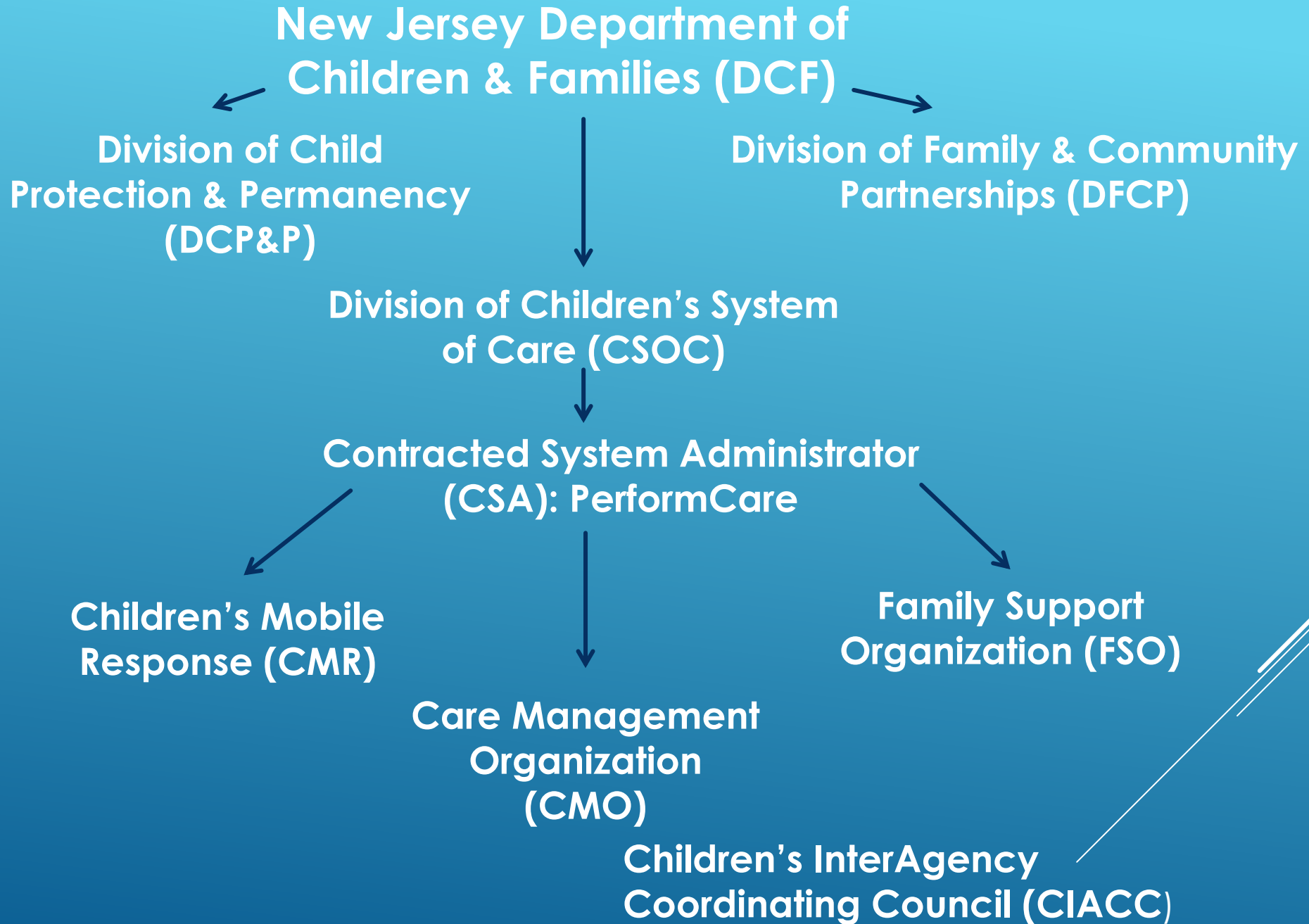
NEW JERSEY'S CHILDREN'S SYSTEM OF CARE (CSOC)



Perform**CARE**

Presented by:





KNOWING THE BREAKDOWN

New Jersey Department of Children and Families (DCF)

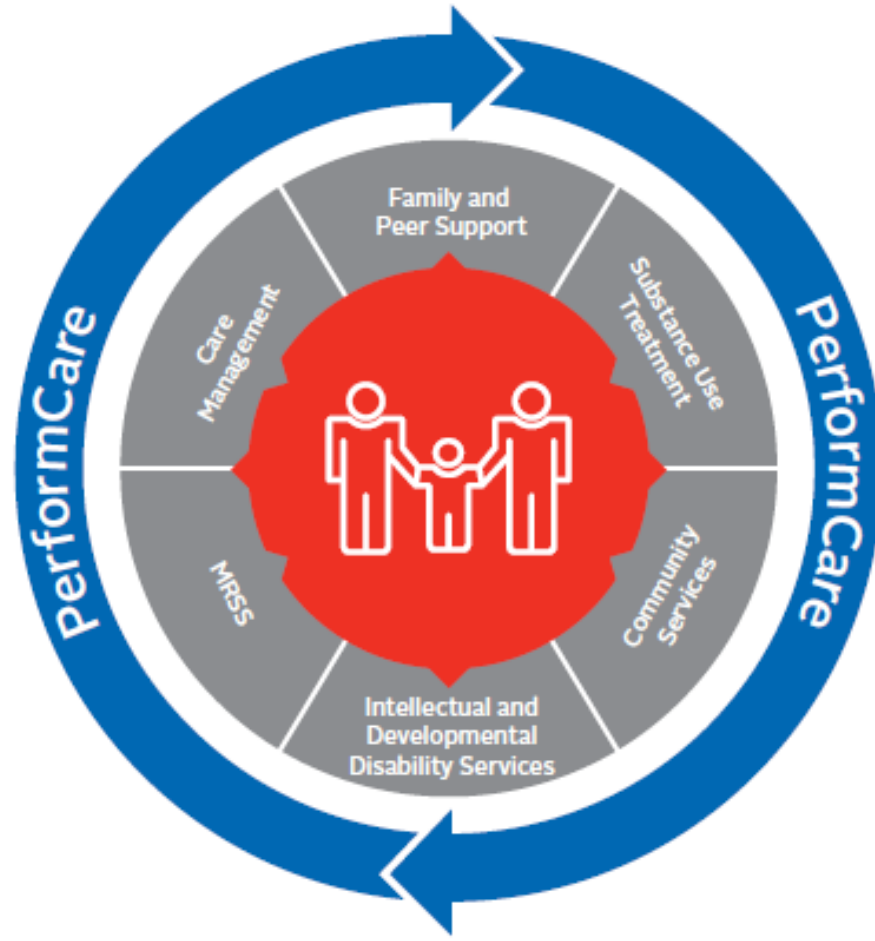


Children's System of Care (CSOC) / **PerformCare**
who you call to access services 24/7



PerformCare dispatches children's mobile response (CMR) and/or connects the youth and family to their local care management organization (CMO) office **if clinically appropriate.**

System of Care for the State of New Jersey



Care Management

Including care management organizations

Family and Peer Support

Family-support organizations, advocacy, and other supports for families

Substance Use Treatment

For eligible youth up to age 18

Intellectual and Developmental Disability Services

MRSS

Mobile response and stabilization services for urgent needs

Community Services

School, child protection, and other local resources

EXAMPLES OF WHEN YOU SHOULD CALL CSOC

1-877-652-7624

24/7/365

- ▶ You are struggling to meet the needs of your developmentally disabled or intellectually disabled (I/DD) child or adolescent.
- ▶ Your child refuses to attend school or has repeated lateness or skipping, or if you have other concerns about his or her school performance.
- ▶ Your child shows physical and/or verbal aggression, bullies others, or is being bullied.
- ▶ You observe family conflict, including youth substance use or refusal to comply with rules.

HOW TO ACCESS NEW JERSEY'S CHILDREN'S SYSTEM OF CARE (CSOC)

- ◆ Parent/legal guardian calls PerformCare directly when seeking services for a youth up to the age of 21.
- ◆ PerformCare is available 24 Hours a day, 7 days a week, 365 days a year.
- ◆ PerformCare triages the initial call and determines next steps.

1-877-652-7624

Children's System of Care Objectives *To Help Youth Succeed...*

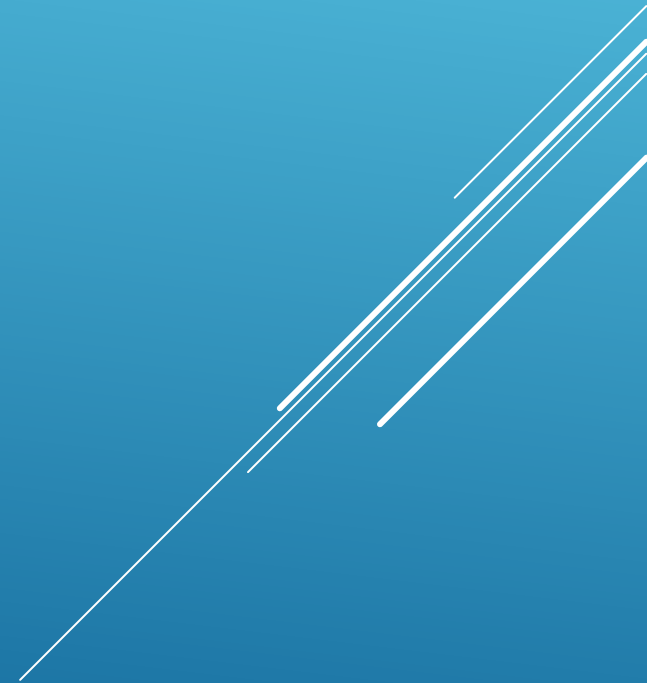
Safe



Healthy



Connected



CSOC SYSTEM PARTNERS

Children's Mobile Response (CMR)

- De-escalation, crisis assessment & intervention
- Treatment planning & family safety planning
- Care management
- Access to community resources (food banks, support groups, etc.)
- Referral to follow-up services
- To access CMR, call PerformCare.

877-652-7624

Care Management Organization (CMO)

- There is a CMO agency for each county
- All services are voluntary and at no cost to the family.
- CMO provides care management services for youth and families with complex needs.
- To access CMO, call PerformCare.

877-652-7624

Family Support Organization (FSO)

- Family run and county based
- Provides direct family to family peer support, education, advocacy, and other services to family members of youth with CMO services.
- Parents of youth enrolled in CMO are automatically linked with FSO for peer to peer support.
- All FSO services are voluntary and at no cost to the family.
- To access the Camden FSO call:

856-662-2600

CSA

PerformCare is the Contracted Systems Administrator for CSOC - Single portal for access to care

CMO

A care management organization that serves children, youth, young adults and their families/caregivers with high and moderate level of care coordination needs

FSO

Family-led support for CMO involved families, community education, warm lines, advocacy

MRSS

Crisis planning for youth with behavioral/emotional needs, available 24/7/365

CHILDREN'S INTER-AGENCY COORDINATING COUNCIL (CIACC)

- ▶ County planning bodies that foster cross-system service planning for youth with behavioral and emotional health needs, substance use, and/or intellectual and developmental disabilities
- ▶ Provide a multidisciplinary forum to develop and maintain a responsive, accessible, and integrated System of Care for youth and their families
- ▶ Serve in an advisory capacity to both county government and DCF in planning for services for youth.
- ▶ Identify needs and address barriers to effective service delivery and make appropriate recommendations on programs and policies
- ▶ Participate in ongoing DCF quality assurance processes
- ▶ Membership includes local system partners, community based organizations, schools, county planning entities, state representatives, and families

CHILDREN'S MOBILE RESPONSE (CMR)

- ▶ CMR can conduct **assessments** for crisis intervention at:
 - ▶ Home, school, doctors' offices, police station, anywhere in the community
- ▶ Depending on level of need: 72 Hour Stabilization services or 8 week stabilization
- ▶ If needs are significant and/or the youth is I/DD, CMR may recommend CMO services to PerformCare – PerformCare makes all determinations regarding CMO services.

CARE MANAGEMENT ORGANIZATION (CMO)

- ▶ Provider varies by county, for example:
 - ▶ Camden County – Camden County Partnership for Children
 - ▶ Burlington County - Partners for Kids and Families
- ▶ Treatment is a process
 - ▶ CMO aims to have youth and families transition to community based, sustainable resources within 90 days.
- ▶ The care manager from the CMO meets with the youth and family 2x a month.
- ▶ The CMO helps the family navigate the Children's System of Care (CSOC).

FAMILY SUPPORT ORGANIZATION (FSO)

- ▶ List of FSOs:

- ▶ <http://www.performcarenj.org/families/fsos.aspx>

- ▶ One to one parent support for all families active with CMO

- ▶ Other services available to non-CMO families

- ▶ Services:

- ▶ Parent partners

- ▶ Nurtured Heart Approach trainings

- ▶ Support groups – mother, father, grandparent

- ▶ Teen groups

- ▶ Help accessing services

- ▶ Advocacy – state services, schools

- ▶ Resource referrals

- ▶ Workshops

There is a ResourceNet for each county in New Jersey...

ResourceNet is a free web directory of programs, supports, services, and events for families specific to county of residence in New Jersey.

It is mobile-friendly and can be translated to different languages, printed, or shared through social media.

Each ResourceNet is administered by the respective CMO in each county and supported by the Department of Children and Families' Children's System of Care (CSOC).

New Jersey ResourceNets

 Atlantic & Cape May Counties: Managed by Cape Atlantic INK	 Middlesex County: Managed by Coordinated Family Care
 Bergen County: Managed by Bergen's Promise	 Monmouth County: Managed by MonmouthCares, Inc.
 Burlington County: Managed by Partners for Kids and Families, Inc.	 Morris and Sussex Counties: Managed by Caring Partners of Morris & Sussex, Inc.
 Camden County: Managed by Camden County Partnership for Children	 Ocean County: Managed by Ocean Partnership for Children, Inc.
 Cumberland, Gloucester and Salem Counties: Managed	 Passaic County: Managed by Circle of care for Families and Children of Passaic County, Inc.
 Essex County: Managed by Partnership for Children of Essex	 Warren, Hunterdon and Somerset Counties: Managed by Tri County CMO
 Hudson County: Managed by Hudson Partnership CMO	 Union County: Managed by Families and Community Together
 Mercer County: Managed by Capitol County Children's Collaborative	

Behavioral Health Needs Are More Common Than You Think

NJ Children's System of Care

Contracted System Administrator — PerformCare®



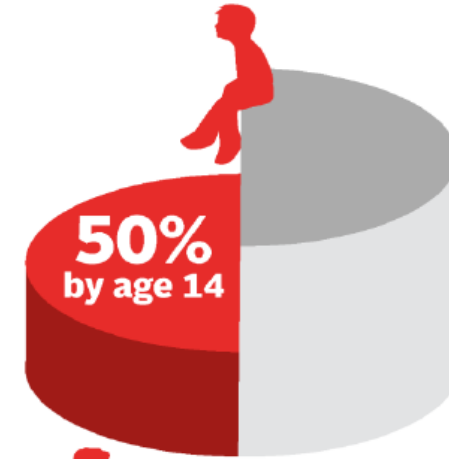
37%
of students

with behavioral health needs ages 14 and older drop out of school — the highest dropout rate of any disability group.

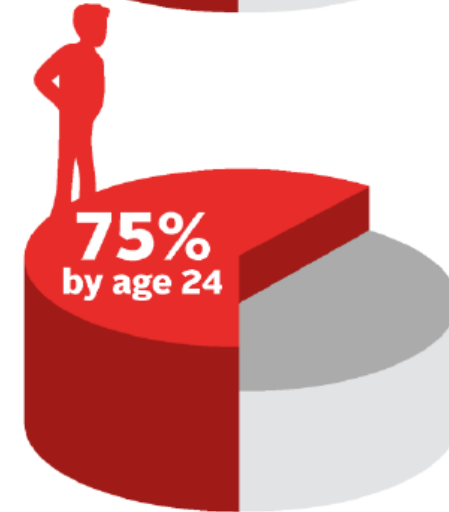
Source: National Institute of Mental Health, www.nimh.nih.gov.

PCNJ-19519577

Behavioral Health Needs Are More Common Than You Think



50%
by age 14



75%
by age 24

50% of people with behavioral and mental health needs are impacted by age 14 and 75% are impacted by age 24.

Source: National Institute of Mental Health, www.nimh.nih.gov.

CSOC Serves youth up to 21 years of age and their families with emotional, behavioral, developmental/intellectual disabilities and substance use challenges.

PerformCare helps connect a parent or guardian to appropriate services for their child through the Children's System Care

Call **PerformCare** / Contracted System
Administrator (CSA):

1-877-652-7624

www.performcarenj.org

APPLYING FOR DD OR DDD ELIGIBILITY

For individuals **under age 18**, eligibility is determined by CSOC

- ▶ Application materials for individuals under 18 available on PerformCare's website:
performcarenj.org
- ▶ **CSOC is responsible for providing services until age 21**

For individuals **age 18 and older**, eligibility is determined by DDD

- Application materials for individuals 18 and older available on DDD website:
state.nj.us/humanservices/ddd/home/
- **DDD is responsible for providing services after age 21**

REQUIREMENTS FOR DD ELIGIBILITY

- Ages
- Diagnosis
- Functional Limitations
- Citizenship
- Residency



DIAGNOSTIC REQUIREMENTS

- A child must be diagnosed with a **developmental disability** in order to be considered for eligibility.
- Common developmental disabilities include intellectual disability, Down's syndrome, and autism spectrum disorder. Attention deficit hyperactivity disorder and other behaviorally related conditions are not developmental disabilities.
- A diagnosis must be made by a licensed clinician through some evaluation process. Diagnoses from a school representative, unless a state licensed clinician, is not acceptable, nor is a prescription pad diagnosis from a pediatrician.


FUNCTIONAL LIMITATIONS

In order to be eligible for services through Children's System of Care a child must have substantial functional limitation in three of seven areas. A diagnosis of developmental disability is not enough to warrant eligibility.

- ▶ Receptive and expressive language function
- ▶ Self-care
- ▶ Learning
- ▶ Self-direction
- ▶ Capacity for independent living
- ▶ Economic self-sufficiency
- ▶ Mobility


Measures of functional ability include standardized measures of adaptive function such as the Vineland Adaptive Behavior Scales or the Applied Behavior Assessment System.

CITIZENSHIP AND RESIDENCY

- The child and/or parent/legal guardian must be a United States citizen or permanent resident with a U.S. Birth Certificate, U.S. passport, Certificate of Naturalization, Certificate of Citizenship, or Permanent Resident Card (Green Card).
 - The child and/or parent/legal guardian must be a resident of New Jersey.
- 
- A decorative graphic consisting of several parallel white lines of varying lengths, slanted diagonally from the bottom right towards the top right, located in the lower right quadrant of the slide.


STEPS TO ELIGIBILITY

Completing the Application

- Complete application online through PerformCare portal, uploading all documentation
 - Complete application through portal and provide supporting evidence through the mail
 - Request paper application from PerformCare or download it from the PerformCare website and submit completed application and supporting documentation through the mail
- 
- A decorative graphic consisting of several parallel white lines of varying lengths, slanted diagonally from the bottom right towards the top right, set against a blue background.


STEPS TO ELIGIBILITY

Application Review

- Upon submission, PerformCare checks the application for completeness
 - Families will be advised if additional information is needed
 - Incomplete applications may take longer to process
- 
- A decorative graphic consisting of several parallel white lines of varying lengths, slanted diagonally from the bottom right towards the top right, set against a blue background.

ELIGIBILITY DENIALS

Options Following a “Not Eligible” Determination

- File an appeal of the determination either with or without additional supporting documentation
 - Reapply if circumstances change
- 
- A decorative graphic consisting of several parallel white lines of varying lengths, slanted diagonally from the bottom right towards the top right, located in the lower right quadrant of the slide.

THE SERVICE ARRAY – DD ELIGIBLE YOUTH

Can include any CSOC service:

- Care Management Organization
- Mobile Response Stabilization Services
- Family Support Organization

As well as Functional Services:

- Family Support Services
 - Intensive In-Home Services
- 
- A decorative graphic consisting of several parallel white lines of varying lengths, slanted diagonally from the bottom right towards the top right, set against the blue background.

NJ FAMILYCARE/MEDICAID COVERAGE FOR ABA SERVICES

- ◇ As of April 1, 2020, NJ FamilyCare, NJ's publicly funded health insurance, including CHIP and Medicaid, covers ABA services for children birth to 21 years with autism spectrum disorder (ASD).
- ◇ You can visit the Autism New Jersey's website for more information on NJ FamilyCare/Medicaid coverage of ABA services: <https://www.autismnj.org/article/nj-familycare-autism-benefit-getting-started/>

CSOC APPROVED I/DD SPECIFIC IN-HOME SERVICES

- ◇ Intensive In Home (IIH) clinical = Licensed level therapist who has experience with the I/DD population – IIH clinical is very similar to IIC but designed specifically for the I/DD youth population
- ◇ Intensive In Home (IIH) behavioral = Functional Behavioral Assessment (FBA) and applied behavioral analysis (ABA) = a set of habilitative services, designed for decreasing dangerous behaviors while assisting youth in acquiring and retaining self-help, communication, and adaptive skills. A focus is put on a transfer of skills to the youth while working with/training the youth's parent or caregiver to implement the behavioral plan.
- ◇ Individual Support Services (ISS) = ISS is skill development for activities of daily living, including self-care tasks



FAMILY SUPPORT SERVICES

Designed to strengthen and promote families that provide care at home for a child or young adult.


Eligibility for Family Support Services

- Child must be determined eligible for Intellectual/Developmental Disability services through the New Jersey Children's System of Care.
- Child must live in the community either with a family member or a Resource Family.

How to apply for and request Family Support Services

- Call PerformCare toll free at **1-877-652-7624** to complete an application by phone.
- PerformCare evaluates for FSS based on individual need, caregiver need, current services utilized/available, and the availability of resources.

FAMILY SUPPORT SERVICES

- Educational Advocacy
 - Camp
 - Assistive Technology
 - **Assistive Devices:** Examples include travel chairs, walkers, and positioning systems.
 - **Vehicle Modifications:** Examples include motorized lifts and ramps.
 - **Environmental Modifications:** Examples include widening of doorways, ramps and/or grab-bars, and their installation.
- 
- A decorative graphic consisting of several parallel white lines of varying lengths, slanted diagonally from the bottom right towards the top right, set against a blue gradient background.

FAMILY SUPPORT SERVICES

- Respite Care
 - Agency Hired Respite
 - Self-Hired Respite
 - Agency After School Care
 - Agency Weekend Recreation
 - Overnight Respite
- 
- A decorative graphic consisting of several parallel white lines of varying lengths, slanted diagonally from the bottom right towards the top right, set against the blue background.

INTENSIVE IN-HOME SERVICES

- Behavioral Services (ABA)
 - Clinical and Therapeutic Services
 - Individual Support Services
- 
- A decorative graphic consisting of several parallel white lines of varying lengths, slanted diagonally from the bottom right towards the top right, located in the lower right quadrant of the slide.

TRANSITIONING YOUNG ADULTS TO THE DIVISION OF DEVELOPMENTAL DISABILITIES (DDD)

- DDD performs eligibility determination for young adults who will require services past their 21st birthday. Families are strongly encouraged to ensure that the DDD eligibility process is completed prior to the young adult's 20th birthday.
- The youth is required to have the appropriate type of Medicaid to qualify for DDD services. For more information, visit DDD's website: nj.gov/humanservices/ddd/services/apply/index.html
- Collaboration between CSOC and DDD includes roundtable conferencing and data sharing.